



# Elektrotechnik Karl-Heinz Mauz GmbH

**ETR-35/21A** (Artikel-Nr. 210030)

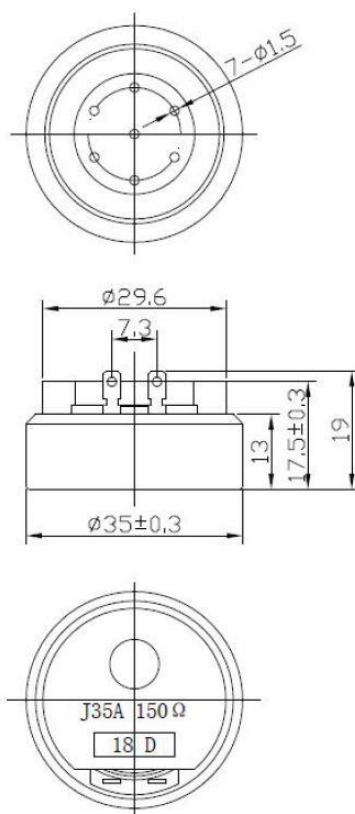
**EKULIT**

## *SPECIFICATIONS:*

TYPE	UNIT	ETR-35/21A
Rated Impedance	$\Omega$	150 $\pm$ 15%
Rated Input Power	mW	30
Maximum Input Power	mW	50
Frequency Range	Hz	300~3.400
Sound Pressure Level	dB	92 $\pm$ 3 Input 60mV (Sine wave) measured with IEC 318
Distortion		<5% at 1kHz, input 60mV
Magnet Material		NdFeB
Operating Temperature	$^{\circ}$ C	-20~+60
Storage Temperature	$^{\circ}$ C	15~+35 25~75%. According to standard GB/T9396-1996

Dimensions :

(Unit: mm)



Adresse: **Felix-Wankel-Str. 35 • 73760 Ostfildern/Nellingen**

Tel: **+49-711/3414023**

Fax: **+49-711/3414024**

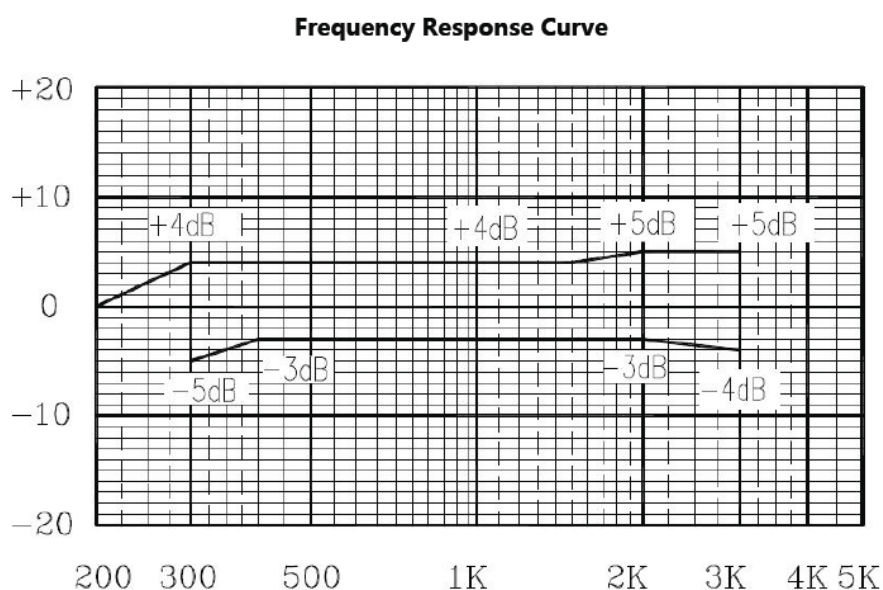
E-mail: **info@ekulit.de**

Web site: **[www.EKULIT.de](http://www.EKULIT.de)**

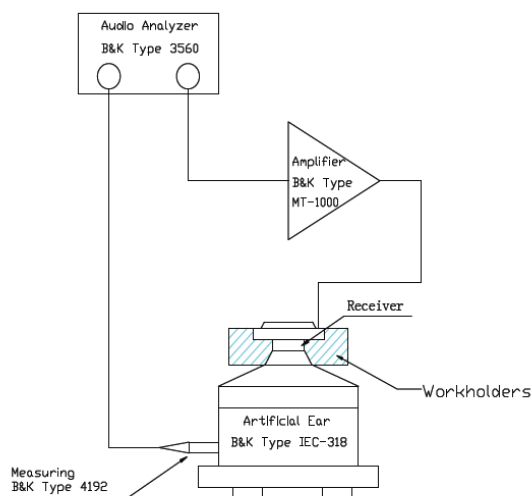
**ETR-35/21A** (Artikel-Nr. 210030)

**EKULIT**

Response curves:



Measuring method:



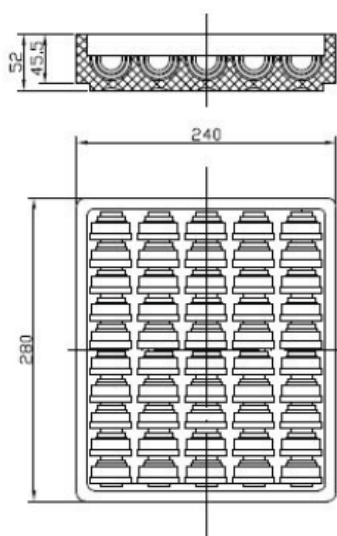
# Elektrotechnik Karl-Heinz Mauz GmbH

**ETR-35/21A** (Artikel-Nr. 210030)

**EKULIT**

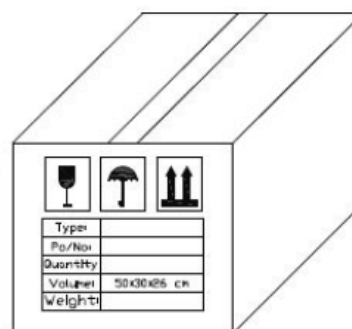
Packing:

units: mm



← Bubble wrap: 50pcs/tray

→ Carton packaging: 500pcs/carton



Remark:

50 pcs per tray

10 tray in one carton

Total:500 pcs per box