

# 業界初。電線/本体の接続箇所を内蔵した メタルクラッド抵抗器TS30G-series

※接続箇所内蔵品実績。当社調べ。 Note: Proven track record for products that can contain the connection part. Data based on Tamura's in-house study.



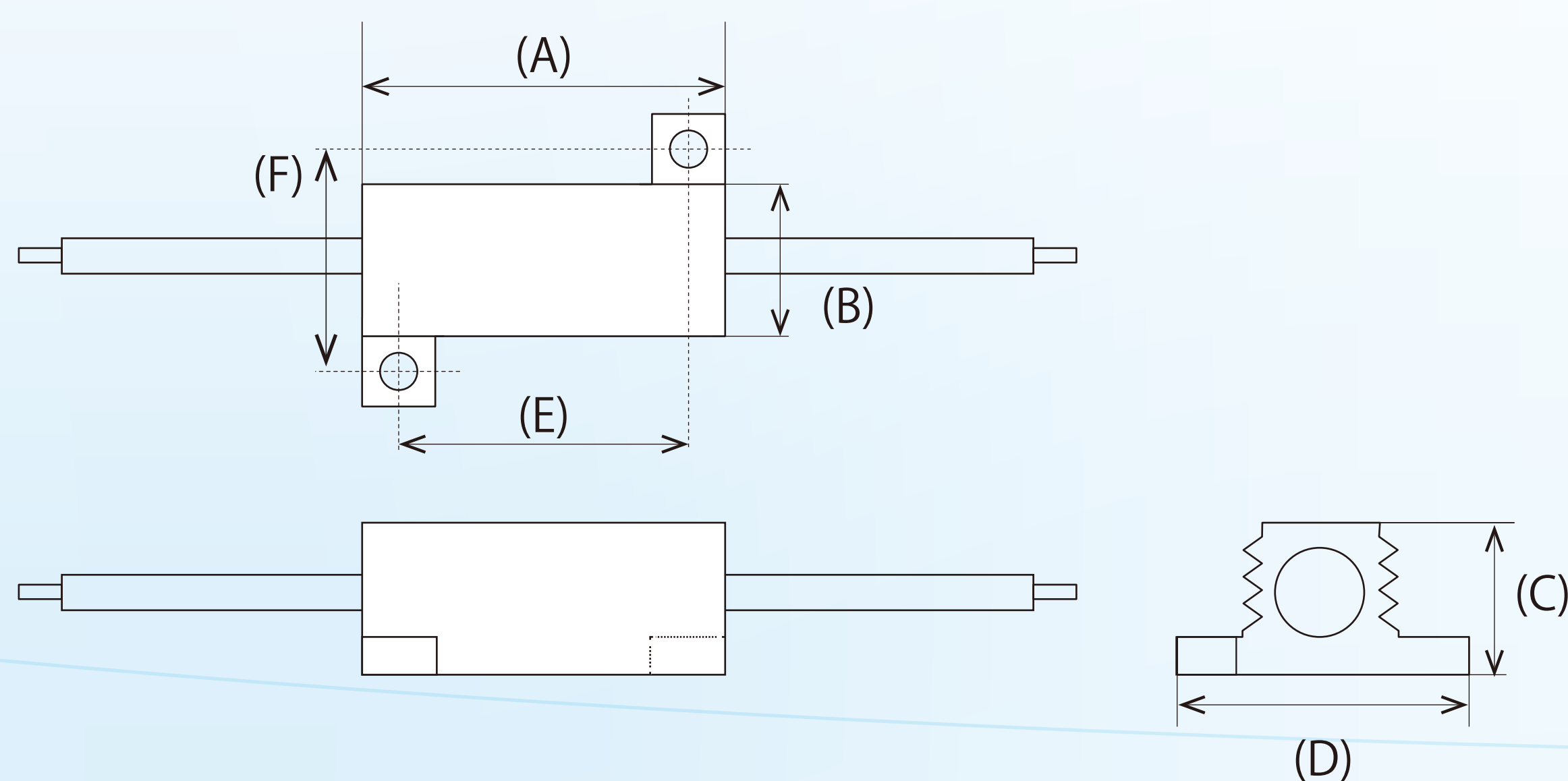
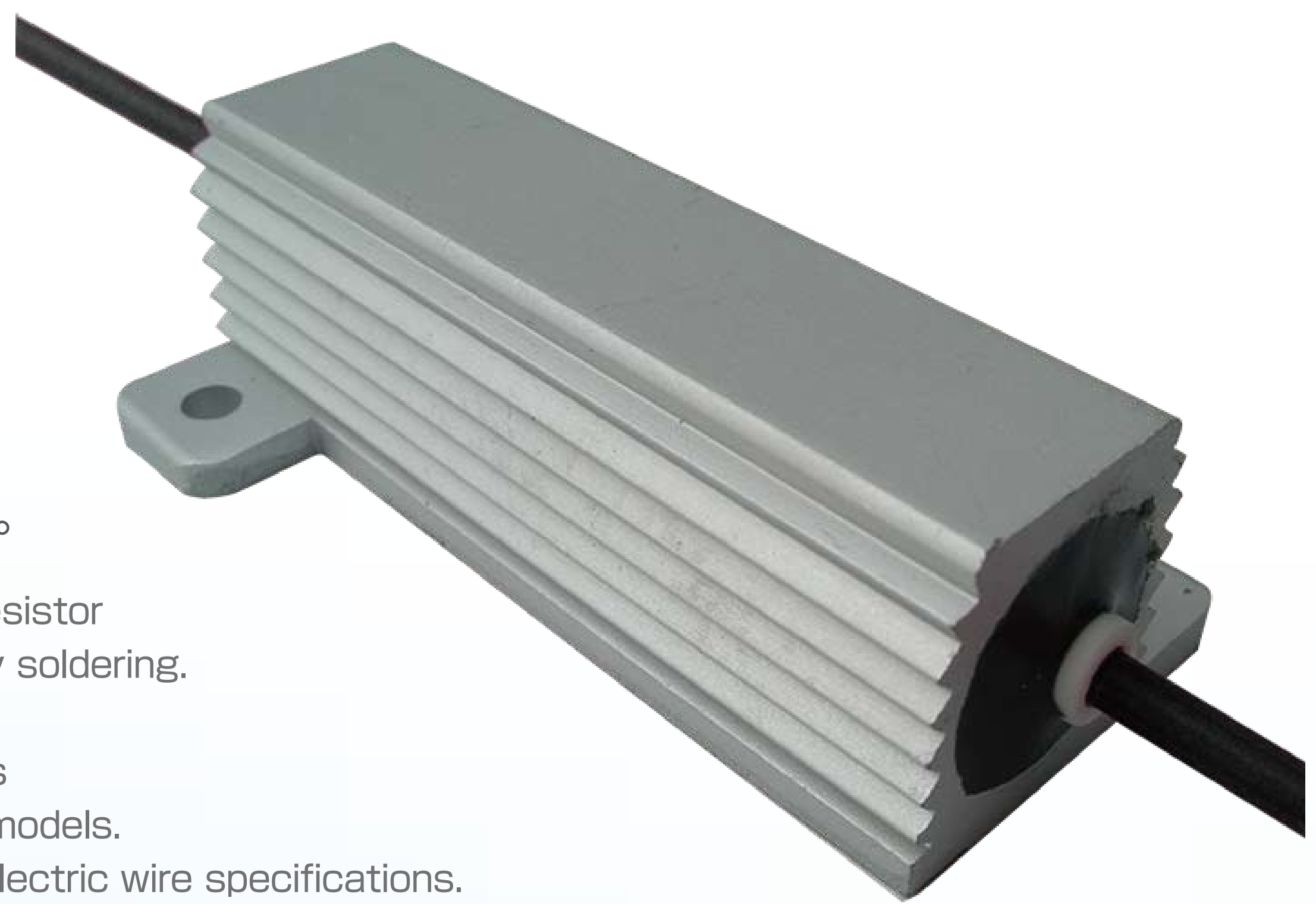
Industry First Metal Clad Resistor Containing the Connection Part between an Electric Wire and Main Body --- TS30G Series Metal Clad

## 電線と本体の接合強度を もう心配する必要は御座いません。

No more concerns about the joint strength between electric wire and main body.

今までは抵抗器と被膜電線をはんだ付けしていた接続箇所を内蔵させ、新構造により、リード引張性能を向上。車載実績有(スナバ回路)。30Wモデルから製品化。電線の仕様につきましてはカスタムご要望も承ります。

The TS30G series contains the connection part between the resistor and the coated electric wire, which were conventionally joined by soldering. This new structure improves the tensile strength of lead. The series has a proven track record for automotive applications (snubber circuit). We manufacture products starting from 30W models. We also manufacture customized products that meet required electric wire specifications.

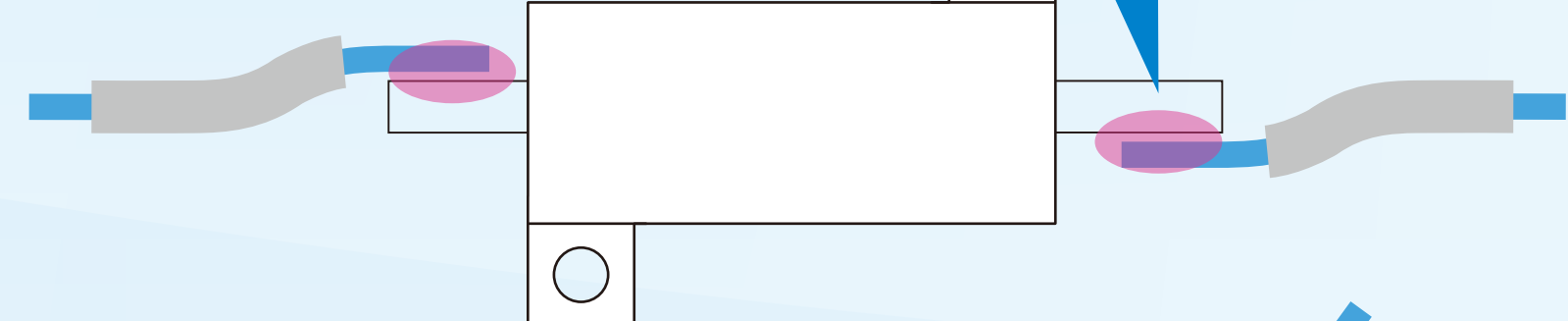


A	B	C	D	E	F
49.2	15.1	16.0	29.2	39.7	21.4

## 特長/FEATURES

従来品

Conventional product



ハンダ付が心配・・・  
Concerns about soldered joints...

新製品

New product



根本から自由に・・・  
Allows flexible design from the base of the electric wire...

1. 電線と本体の接続箇所を内蔵。
2. 電線、コンタクト、ハウジング等カスタム対応可。
3. 電線の引き回しが自由に、省スペース化に貢献。

1. Contains the connection part between the electric wire and the main body.
2. We can supply products customized for electric wires, contacts, and housing in accordance with your needs.
3. Enables the electric wire to be freely routed and contributes to space-saving.